



# Learning Naturally

at Beddington Infants' School



Letter 2

Thursday, 30th November '23



Hello everyone,

As you know, we are moving into a very busy time of the year. In this letter you will find a lot of useful information covering the time to the end of term. We hope you enjoy the events!

## Christmas Shows

**Each show runs twice to make it easier for you to attend. There are no tickets for performances (except for the Year 2 evening performance so that we can manage numbers —there is no charge).**

The children and staff work very hard to prepare these shows. **The shows are long and the hall is dark as we do not have the main lights on, so we don't allow younger siblings to attend. The performers are very young themselves and deserve the opportunity to perform without distraction.** We run a crèche during the performances for younger siblings. Siblings in the school will watch the dress rehearsals.

**CHILDREN UNDER THE AGE OF 7 WILL NOT BE ADMITTED TO CHRISTMAS PERFORMANCES**

## Crèche Volunteers

We will provide a crèche for all of the shows **except the evening Year 2 performance**. These crèches have always been very successful and have been run by a member of staff with help from parents/carers. There is no charge.

- **If you will be bringing a young child to the crèche you will need to book a place in advance.** To book a place at a crèche please click on the link below or talk to a member of the office team. receive an email with a Google Form to book a place for your young child at the crèche. Please speak to a member of the office team if you need any help. This is the link to the booking form <https://forms.gle/UNAU2RhN2aiMPKYr9>
- 
- If you can volunteer to help in one of the crèche sessions when your child isn't performing, we will reserve 2 seats in the front row of your child's performance for you, as a thank you.

## Photography at shows

No flash photography during the shows please as it distracts the children. There will be photo opportunities at the end of the shows. We recommend that you stand at the back or sides of the hall if you're recording so that you don't block the view of others.

***Photographs and videos are for personal use only and must not be posted on Facebook/Instagram or other social networking sites.***

**Collecting siblings after afternoon shows:** If an afternoon show ends before 3.05 you are welcome to take your child home early, once s/he has changed out of the costume. You are welcome to collect brothers and sisters too, to save you waiting in the cold!

**Of course all children are welcome to stay until 3.10 as usual, and most do.**

**Dates of shows**— these were included in the list of dates earlier this term, there is a reminder below. Sometimes

• • • • •	Year Group	Date and Time	•
•	Nursery Bear/Fox Cubs	Tues. 5th Dec. 11.00am	•
•	Nursery Lion/Fox Cubs	Tues. 5th Dec. 2.30pm	•
•	Year 2	Thurs 7th Dec. 2pm	•
•	Year 2	Thurs 7th Dec. 7.00 pm	•
•	Year 1	Tues. 12th Dec at 2pm	•
•	Year 1	Wed. 13th Dec at 9.30 am	•
•	Reception	Tues. 12th Dec at 9.30 am	•
•	Reception	Wed. 13th Dec at 2pm	•
• • • • •			•

## Charity Collection following each Christmas Show

Following each of the shows there will be a voluntary collection for charity. Proceeds will be shared between 2 charities who have supported members of our school community this year.

- Jigsaw4U
- Sutton Nightwatch



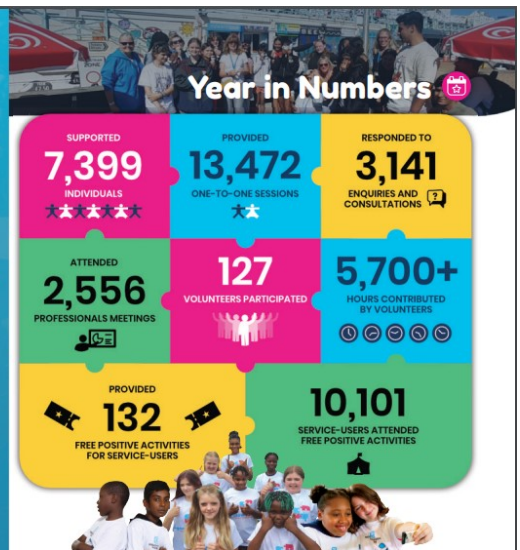
### Parent Testimonials

"The service is in my opinion vital to young people in this day and age."

"I have noticed a real difference in his ability to cope in school since Jigsaw4u's help. Knowing that he has support puts my mind at rest."

"Thank you so much for the time you took to talk to me and listen to my worries. You have made such a difference to how I now view the future."

"My children are now happy, which is down to Jigsaw4u."



If you are experiencing difficulties you are welcome to talk to us confidentially and we will either offer you support or put you in touch with someone who will be able to help.

### Who We Are

Sutton Night Watch is a registered charity (1171903) which was set up to support and raise awareness for the homeless people within the London Borough of Sutton and surrounding areas.

Over the past 7 years, with the support of local business, the community and fundraising efforts, we have been able to grow and expand into our own, permanent base (35 Manor Road, Wallington) in December 2019. From here we are able to not only provide the essentials such as food, showers and clothing supplies, but we are able to also offer our service users a range of health services, benefit advice, wellbeing and educational based courses, clothes, washing facilities and most importantly, a place where they are seen, heard and understood.



### Birthdays

Some of our families have asked if they can bring sweets/cake/fruit to school when their children have a birthday. While it is very generous, our policy is that we don't have food for these occasions, primarily because of potential allergies.

Children don't expect anything and are happy with everyone singing and wishing them a happy birthday in the class and in assembly. Thank you though!



### Contact Details

Just a reminder to update the office team if your address or contact details change at any time, as it is essential that we are able to contact you. Thank you.



Miss Smith is finalising details of the clubs for the new term. She will be in touch as soon as possible.

Clubs for children in Reception will start in the Summer Term.

Thank you Miss Smith.

### Parking for Christmas Shows

We are delighted when so many of you come to the Christmas shows but please consider our neighbours when you park.

As you know, there isn't a lot of room for parking around the school itself.



### Christmas Cards

Some children like to give cards to their friends, although we have no expectation. There will be a post box in each classroom from Monday, 11th December until Monday, 18th December.

If your child would like to bring cards to school please make sure that the name of the child and the class s/he is in are written on the envelope— it can be very confusing otherwise. You will receive a class list in the book bag in the next few days. Please don't feel that your child has to send cards!



### Carol Service

You will receive a separate letter about the carol service in St Mary's Church, on Thursday, 21st December at 10.00am. Nursery children won't attend as they will be having their parties.

You are all very welcome to join us. Nearer the time, we will be asking for volunteers to walk with the classes. Thank you.



### Year 2 Evening Performance

#### Starcatchers and The Lost Toys

Thursday, 7th December at 7pm

**You will receive 2 tickets per child.**

There is no charge for tickets.

**There is no admission to the evening performance without a ticket!**

**Children younger than the children performing will not be admitted. There is no crèche for this performance.**

The evening Year 2 performance is particularly popular so, due to fire regulations, you will need a ticket to attend. Each child will receive two tickets for family members/friends. If you won't be attending the evening performance, or don't need both tickets, please return the extra tickets to us via the book bag so that we can redistribute them.

If you would like extra tickets please let the office know, or write a note in the blue book and we will add your name to a waiting list.

**There will be no entry without a ticket, so please remember to bring them with you!!**

**Thank you!**



### The Morning Following the Year 2 Evening Performance

Start time: 8.55 or 10.30.

This is a very special time for the children in Year 2. They are always very excited about coming back for the evening performance! As it is a late evening for them, they don't have to come to school until 10.30am the following day if they are tired. Children arriving at 10.30am will **not** be marked late in the register on this one occasion.

**Of course children are very welcome to come at the normal time too, and most do.**

If your child is unable to attend that day due to illness please let us know by 9am as we will order a school dinner for all children who usually have a school dinner otherwise.







The parties for children in **Reception, Year 1 and Year 2** will be on **Friday, 8th December** in the afternoon (the same day as the Christmas dinner).

**Nursery:** The Nursery party will be on the last day of term, Thursday, 21st December. The Nursery Team will write to you with details.

The children will be making party hats, enjoying party games and dancing. We used to ask families to contribute food for the parties but it required a lot of organisation, parents/carers to help (we know it's a particularly busy time of the year) and we always ended up with far too much food. Instead, we now ask for a contribution towards the food and we provide it.

**Please pay £2 via ParentPay or contactless payments can be made in the school office.**

The children are welcome to wear party clothes to school on the day of the party. Please remember that it is a long day and that they will still be going into the playground so they need to be warm and to wear sensible shoes. They may also be painting or using glue so it is best not to wear very new clothes. Thank you!

### Letters to look out for....

- All year groups:  
Notes from staff about clothes that your child may need for the performance.  
We have a good supply of costumes which have been made by very kind volunteers over the years and stored carefully by the staff, so usually they only need clothes to wear underneath. If you are able to make costumes please let us know as we are always looking for volunteers to update costumes.

### Permission slips

- St Mary's Church for our Carol Service on Thursday, 21st December (Reception, Year 1 and Year 2)
- Year 1 Carol Singing at Bridge House on 19th /20th December (2 groups)
- Year 2 Carol Singing at the Holy Trinity Friendship Club on 20th December.



### Second Hand Uniform

Please remember that we do have a stock of good quality second hand uniform donated by families. You will find items on a rack in the Office Reception Area.

We ask for a small donation.



Thank you very much to those who donate clean uniform.

If you have any **wellingtons** or **plimsolls** that your children have grown out of we would be very happy to give them a good home too.

Thank you!



### Grapes

You may be aware that grapes have been highlighted as a potential choking hazard for young children. As a result, our caterers chop grapes that they provide for the children.

Any grapes children have in packed lunches should be cut please. The grape should be cut from top to bottom, as cutting across the widest part means that it is still a choking hazard. Thank you.

