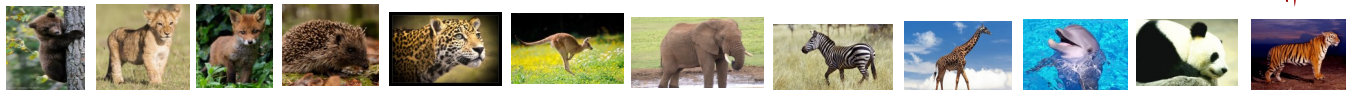


Beddington Infants' School



Letter 1

Friday, 9th September '22



Dear Families,
Welcome everyone!

We're delighted to see how quickly the children have settled into the school routine. Thank you to families of children in Nursery and Reception for accommodating the slow intake, it really does enable the children to settle very well.



We were all shocked and saddened to hear of the Queen's death yesterday. We talked about her amazing life and achievements in assembly this morning. We understand that events such as this can affect some people very deeply so please let us know if we can help you in any way.

I only write newsletters when there is something to tell you, as regular emails seems to be a more effective form of communication, so please read all the pages. I hope you find the items included in these letters useful. If there are other things that you would like included, please let me know.

Newsletters will always be numbered so you will know that you have received them all. You will receive a paper copy of this newsletter but please check that you have also received an emailed version. If not please let the office team know so they can ensure you receive future emails. If your email address changes at any time please let the office team know. If you prefer to have a paper copy please let the class staff know.

If ever you would like to talk to me, or a member of staff, about anything please let us know and we will see you as soon as we can. You can make an appointment via the school office.



Dates for the term – We have included as much as possible, including the end of term Christmas productions. Please keep these dates somewhere safe!

Thank you, Liz Kearney

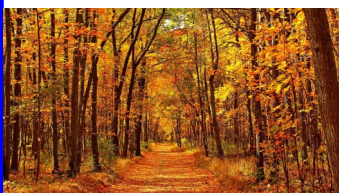
School Day Timings

The school gates are open between 8.45 - 8.55 each morning.

Children in Reception, Year 1 and Year 2 will be marked late in the register if they arrive after 8.55am.

The school day for children in Reception, Year 1 and Year 2 ends at 3.15pm.

Our Nursery offers 30 Hour Provision i.e. the full day.



Morning Nursery	Bear Cubs	8.45am—11.45am.
Afternoon Nursery	Lion Cubs	12.30pm—3.30pm.
All day	Fox Cubs	8.45am —3.30pm (including 45 minutes lunch time).

If you arrive after the gates have been closed please take your child to the school office and ensure that you write your child's name in the book in the office reception area. A member of staff will take your child to the classroom. Children who have missed the gate will need to wait until the children and staff have come in from the playground, to ensure that they are supervised on arrival at the classroom. Parents/Carers of children who arrive, or are collected late will receive a termly overview of the total minutes lost, as this can build up very quickly and the impact can be profound.

What does my child need?



Water Bottle

Every child should have a named, clear water bottle at school every day please. Refillable water bottles are on sale from the school office for £3. Replacement bottle tops cost 50p. Of course your child is welcome to use any clear plastic bottle!

Children have access to chilled water dispensers throughout the school to refill bottles as many times as necessary.



Once a term, we ask you to donate a glue stick (any brand but it should be white glue please), a box of tissues and a roll of cellotape please.

As you might imagine, we get through lots of these items, and your donations enable us to allocate saved funds to other aspects of the curriculum. Please do not name these items as they will be available for everyone in the class to use throughout the term.



Book Bag

Children in Reception, Year 1 and Year 2 should bring this book bag to school every day. Children in Nursery are welcome to choose books from the Nursery Library every day. Book bags are on sale from the school office for £5. They are available in red, blue or purple.

Children should not bring a rucksack to school please, as we do not have space to store them.



Please remember to:

- **name all items** of clothing. We know that it takes time but, as all children are wearing the same uniform it is very difficult to make sure that you get the correct items back otherwise.
- update the office team as soon as possible if your **contact details** or **Emergency Contacts** change.

Parking Outside Schools — Safety Initiative.

Thank you to those of you who walk/scoot/cycle/skip to school. For those of you who live further away and need to drive, local police have suggested that we ask you to park in the car park of Beddington Park which leads to a lovely walk through the park and counts as walking to school. Parking wardens and local police monitor parking around all schools.



Our very popular **Breakfast Club** is in our school hall every morning. Children from Reception, Year 1 and Year 2 are welcome to attend from 7.30am.



It is run by Mrs. Sue Green and Mrs Chris Hawkins. Mrs Hawkins is unable to be at school at the moment although she hopes to return soon. Thank you to Mrs Appleton, Mrs Wenham and Miss Brice who are taking turns to provide cover.

The children enjoy a healthy breakfast and then choose from a wide range of activities to enjoy with their friends.

Once your child is registered s/he can attend any day without pre-booking as long as your child is registered. There is a reduction in cost if you are able to book in advance. Please contact the office to book. At 8.45 the Year 1 and 2 children are taken to the playground (or hall if it is raining) and Reception children are taken to their classes to meet the other children who will have started coming through the gate. Please ask at the office, or put a note in your child's Home/School Book requesting a registration form if you are interested.



New Sensory Room



You may be wondering why this new building appeared during the holidays. We were delighted to receive a grant to create a Sensory Room. It will be used for all children but will be particularly useful to support some of our children with additional needs. The equipment will be installed this half-term. I will let you know when it is finished.



Thank you to Miss Smith for organising a wide range of After-School Clubs. During the Autumn Term, After-School Clubs are for children in Years 1 and 2.



Traditions of Beddington Infants' School



THE BEDDINGTON AND WALLINGTON NATIONAL SCHOOLS.
1843

The Bell Tower

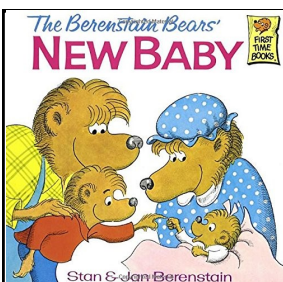
Tradition is very important to us at Beddington Infants' School as it gives us a meaningful link with the past. The bell tower at the front of the school may seem unusually placed until you understand its story.....

For those of you who don't know, the original Beddington Infants' School stood at the front of the school, where the grassed area is now.

In 1974, this school was built behind the original school to avoid loss of learning time. On completion of the new build, the members of the Parent Teacher Association were asked to choose one thing from the old building to keep as a memento. They unanimously chose the bell tower and it now stands where it was on the previous building.

As per the Beddington Infants' tradition, the children ring the bell on the last day of each term. Sadly the bell was stolen in 2012. We commissioned a new 'Olympic' bell, which is installed on the last day of term and taken out of the bell tower when we have finished ringing it to avoid it being stolen again. It is incredibly heavy!

Apparently our bell tower can also be found in a 'Where's Wally?' book. I haven't yet found the book myself, but if you come across it please let us know.



Beddington Infants' School Gift Box

As many of you know, for many years Beddington Infants' School has continued a tradition called 'The Gift Box'. Children bring a coin or two to school during the week and put it into a money box in the classroom. On Friday the money boxes are taken to assembly where we thank everyone and, from there, they go to the office where the money is counted and banked. This money is then used to buy little gifts for families if a new baby is born, or if one of the children in the school, or a member of a child's immediate family is in hospital over night.

Your child would choose a gift from the Gift Box and then, with a friend, make a card from everyone at Beddington Infants' School. This is a very nice way for your child, and the school community, to be able to mark these occasions. Families have often commented that this simple act has been very important and special for their children, especially when a family is going through a particularly exciting or difficult time. We hope to be able to continue the Gift Box tradition, but can only do so if families support it.

From time to time we donate the week's Gift Box collection to a charity. We will always let you know in advance so that you can decide which charities you would like to support across the year. Please see the Term Dates (attached) for more details.



Eco School

We are very proud of the fact that we were the first school in Sutton to be awarded the school's Eco Award in 2006. The award is known as The Green Flag. Every two years we are assessed to check that we are continuing and improving. In July we were reassessed and awarded a Distinction. Thank you to everyone for your commitment, especially Mrs Qazi and Mrs Rudling!

Mrs Rudling leads the Eco Committee. One children from each class attends. In order to give everyone a turn, different children attend each meeting and report back to the other children in their class.

We are fully committed to the principles underpinning the Green Flag Award. If you have any ideas for how we might be more sustainable, or you would like to get involved please let us know!

We are particularly interested in exploring sustainable forms of energy with the children. If you know where we can get a reasonably priced, *and sized*, wind turbine we'd love to hear about it!

In the meantime, all year groups would welcome any keen **gardeners** – no specialist knowledge necessary! Please talk to the staff in your child's year group or drop a note into the office or via the book bag. Thank you!

We help the children to consider the environment at every opportunity. Adults and children will be collecting leaves as our trees prepare for winter. The children will be reminded that the compost they create will be used when we garden.

The RIDAN Composter (which composts cooked and uncooked food) provided all the compost we needed last year – including enough to fill all the wheelbarrows. We are very grateful to Caterlink and Tesco for giving us grants to buy it.



As a school, we make good use of the outdoor learning environment as part of the daily provision, enabling children to experience the seasons in a meaningful way. Children are encouraged to look after resources to avoid waste eg to use both sides of a piece of paper, as appropriate.

E mailing documents, such as this newsletter, saves a lot of paper. We have recycling bins in each classroom and office. We grow flowers and vegetables and water them with water from our water butts. Children are encouraged to think about when we should turn off lights, computers etc. We save a significant amount of electricity by turning all electrical equipment off at the wall overnight. Our taps turn themselves off. We have strips on the doors to retain heat while the doors are open.

Again, please let us know if you can see where we can develop further.



Recycling for Families

Ink Cartridges



Shoes



Mobile Phones



Stamps



Glasses



Batteries



Clothes



Where do I recycle these items?

Clothes and shoes (in pairs) should be in supermarket size carrier bags (bigger bags get stuck) and then 'fed' to Bertie (the big blue bin with eyes at the front of the school).

If you would like to recycle any of the other items at any time please bring them along to the school office. Not only will you be helping the planet, we actually get money for recycling clothes and shoes. Thank you !



Promotional Leaflets

As an Eco School, we will not put 100s of leaflets in your child's book bag. Apart from a waste of paper, giving leaflets out to each child was a waste of learning time.

If sports coaches, dance teachers, or similar, bring leaflets to the school, we display one on the notice board by Elephant Class at the front of the school and keep a few copies in the office so that people who are interested can pop in and ask for one.

